

Quality-Capture

This is a software that can do pass/fail tests on loudspeakers, microphones and audio electronics. It is recommended for small factories, audio rental and repair shops.

Quality-Capture is able to do distortion, multi-tone, impulse, frequency response measurements and impedance measurements, it can do multi channel measurements in different domains at the same time like frequency response and impedance curve requiring 4 input channels.

Quality check editor

It is very easy to create a pass/fail test, make a reference measurement and make sure it is the active curve and then go to the QC tab. There you click on New and the measurement is copied and you can then edit the upper and lower limits graphically, the limits are optional but you must have at least one upper or lower limit in a test. When done it is pushed into the QC tree to the left. You can also edit pass/fail tests later by a right click on a test in the QC tree and of course test the pass/fail tests. The pass/fail tests can of course be password protected.

Server-client concept

Quality-Capture is delivered with a server software that handle all the pass/fail test results. This server software can be installed on one of the machines on the local network, see below.

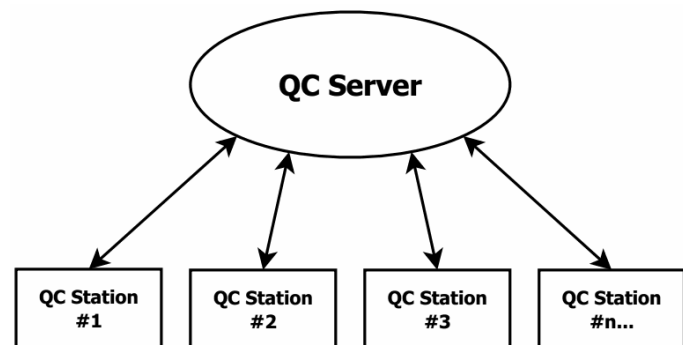
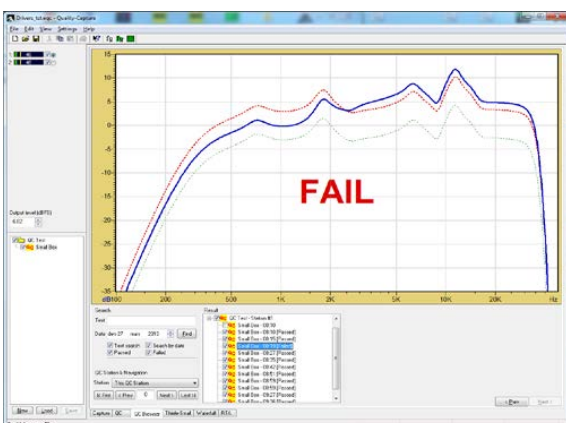
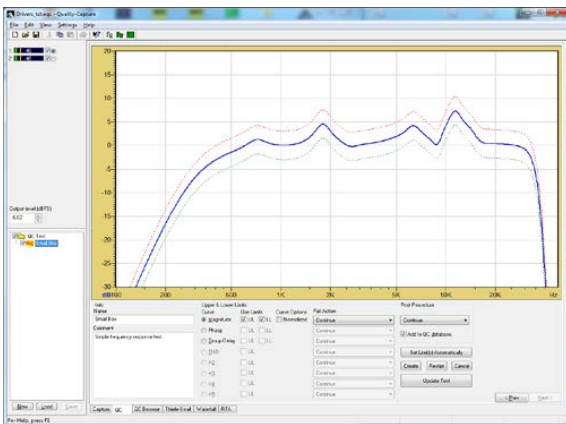
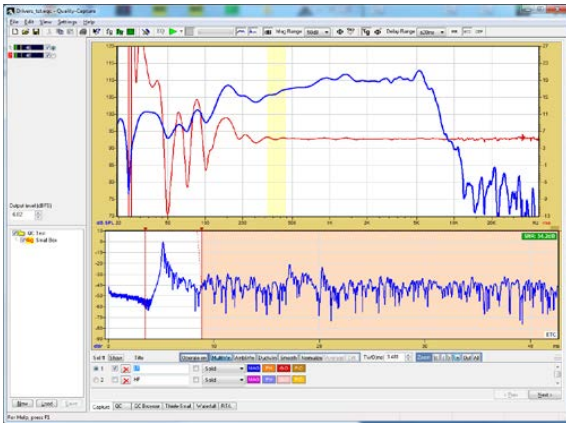


Fig 1. The server-client concept, up to 256 QC Stations can be connected at the same time

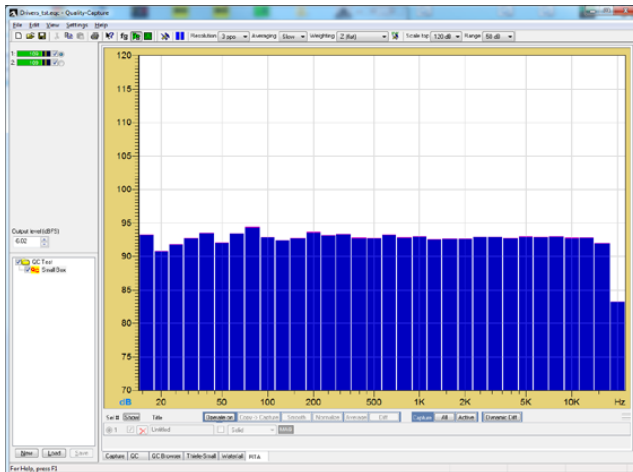
It will then be accessible from any Quality-Capture instance on the local network and it is then possible to browse the database for results from any QC-Station (Quality-Capture instance). The result from the database search can be filtered by name, date, pass, fail and more. It is important to have a backup policy for the data, the server software can be configured to do a backup at any time every day by copying the database content to another computer/server on your local network.

Thiele-Small Parameters

It is also possible to calculate Thiele-Small small signal parameters from 2 impedance curves where one is loaded with a mass or mounted in a box (Delta Mass and Delta Compliance method). A reduced set of the T/S parameters can be calculated from 1 impedance curve like the resonance frequency f_s , the Q values QMS, QES and QTS and the coil inductance $Levc$.

Available stimulus types

- MLS – Can be used for impulse-response, frequency-response and impedance
- Chirp – This can be accelerated for fast frequency-response/impedance measurements
- Farina Chirp – This also measure THD with up to 9 harmonics where 5 harmonics can be used for pass-fail tests
- Multi-Tone – Useful for Rub'n Buzz test and test of other non-linear distortion types.

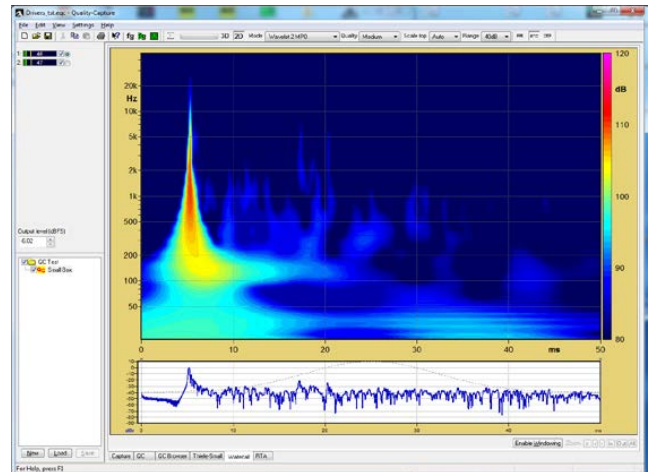


Additional Tools

If a test fails there are some useful tools available like a Function Generator, Spectrum Analyzer and a Real-Time Analyzer (RTA). There is also a waterfall tab where you can do ordinary waterfall or wavelet analysis.

Requirements

- PC with XP SP2 or Vista SP2 or Win7 or Win8; 32 or 64 bits
- CPU: Intel i3 or better. Two or more cores
- RAM: 2 GB min, 4 GB or more is recommended for 64 bits
- Display: minimum 1280 x 800 pixels
- Soundcard: Windows compatible (Wave/WDM or ASIO) with 2, 4, 6, or 8 inputs, 16-bit/44.1k to 24bit/192k sampling, with full duplex (simultaneous play and record) capability



WaveCapture
.com a Bävholm/
Grenander
Mission

Contact

Johny Grenander
johny@wavecapture.com
+46 31 49 77 42

Dan Bävholm
db@wavecapture.com
+46 31 93 39 85